



®



# LISTER PETTER GROUP

[www.lister-petter.com](http://www.lister-petter.com)  
[sales@listerpettergroup.com](mailto:sales@listerpettergroup.com)



POWERING YOUR NEEDS

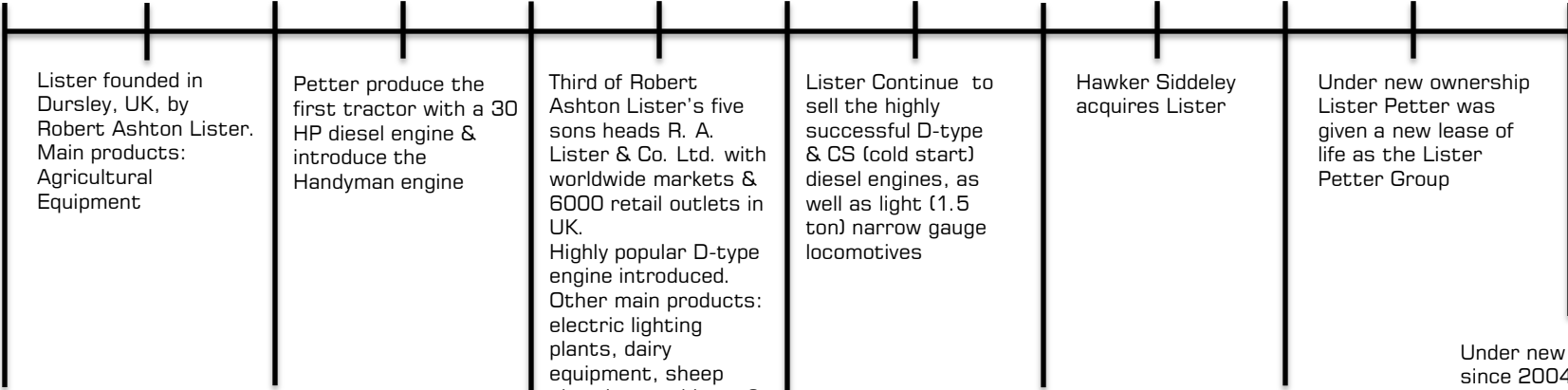
S I N C E 1 8 6 7



# Three Centuries of Experience



1865 1867 1890 1902 1912 1920 1930 LATE 1940 1957 1965 1986 2004 TODAY



Lister founded in Dursley, UK, by Robert Ashton Lister. Main products: Agricultural Equipment

Petter produce the first tractor with a 30 HP diesel engine & introduce the Handyman engine

Third of Robert Ashton Lister's five sons heads R. A. Lister & Co. Ltd. with worldwide markets & 6000 retail outlets in UK. Highly popular D-type engine introduced. Other main products: electric lighting plants, dairy equipment, sheep shearing machinery & garden furniture

Lister Continue to sell the highly successful D-type & CS (cold start) diesel engines, as well as light (1.5 ton) narrow gauge locomotives

Hawker Siddeley acquires Lister

Under new ownership Lister Petter was given a new lease of life as the Lister Petter Group

Petter founded in Yeovil, UK. Main products: Ironmongery

Ernest & Percy Petter design & build oil engine & build the UK's first car with an internal combustion engine.

R. A. Lister & Co. Produce petrol engine, mainly to power sheep shearing equipment

Petter open Nautilus works in Reckleford, employing 500 people & making 1500 engines a year. Main products: stationary petrol & diesel horizontal crank engines, from 1 HP

Manufacture of 2-stroke & 4-stroke diesel engines at Yeovil, Staines & Loughborough

Hawker Siddeley acquires Petter

Hawker Siddeley combines Lister & Petter into one company. Lister Petter. Research & Development under Hawker Siddeley enabled Lister Petter to make significant advances in its engine know-how. This culminated in its highly successful ALPHA engine

Under new ownership since 2004 Lister Petter group is a U.A.E. based industrial conglomerate with manufacturing facilities in the UK, US, China, India and South Africa and distribution hubs in the UK, US, France, UAE, India, China, South Africa and New Zealand. The group specialises in tailored solutions for it's customer base with an emphasis on both traditional and hybrid power solutions.

www.lister-petter.com sales@listerpettergroup.com





# Lister Petter Group A Truly Global Organisation

## **LISTER PETTER LTD.**

Long Street,  
Dursley, Gloucestershire  
GL11 4HS, England  
**Tel: +44 145 3 544 141**  
**Fax: +44 145 3 546 732**

## **LISTER PETTER AFTERMARKETS LTD.**

5 Narrowboat way  
Netherton, Dudley  
DY2 0XQ, England  
**Tel: +44 138 4 451 710**  
**Fax: +44 138 4 451 711**

## **LISTER PETTER FRANCE SA**

9, Avenue de l'Escouvrier  
95842 Sarcelles  
Cedex, France  
**Tel: +33 139 3 304 20**  
**Fax: +33 1341 957 60**

## **LISTER PETTER AMERICAS INC.**

815 E. 56 Highway  
Olathe, Kansas  
66061, USA  
**Tel: +1 913 764 3512**  
**Fax: +1 913 764 5493**

## **LISTER PETTER MIAMI**

11400 Interchange Circle North  
Miramar, Florida  
33025, USA  
**Tel: +1 954 499 8551**  
**Fax: +1 954-499-2778**

## **LISTER PETTER SOUTH AFRICA**

Directech Industrial Park  
Kya-Sand, Randburg  
South Africa  
**Tel: +27 11 708 2202**  
**Fax: +27 11 708 2217**

## **LISTER PETTER OCEANIA LTD.**

52 Arrenway Drive,  
Albany, Auckland  
New Zealand  
**Tel: +64 9 485 3135**  
**Fax: + 64 9 485 0002**

## **LISTER PETTER FZE.**

Dubai Silicon Oasis  
Wing B, Office 206  
Dubai, U.A.E.  
**Tel: +971 4 372 43 15**  
**Fax: +971 4 372 43 18**

## **LISTER PETTER INDIA (P) LTD.**

32/2/5/1, Kondhaka (BK)  
Pune 411048  
India  
**Tel: +9120 2693 2688**  
**Fax: +9120 2693 3286**

**www.lister-petter.com**  
sales@listerpettergroup.com



**POWERING YOUR NEEDS**  
S I N C E 1 8 6 7



# Brand Values

- Quality
- Simplicity
- Flexibility
- Service
- Durability
- Reliability
- Low through-life costs



[www.lister-petter.com](http://www.lister-petter.com)  
[sales@listerpettergroup.com](mailto:sales@listerpettergroup.com)



POWERING YOUR NEEDS  
S I N C E 1 8 6 7



# Our Market Sectors

- Telecoms
- Construction
- Agriculture
- Marine
- Military
- Disaster Recovery
- Standby Power
- Emergency Power





# Engineering & Development

- A dedicated team of development engineers
- A dedicated team of application engineers
- Full test cell capability
- Own EPA & EU emissions testing and certification
- Six sigma programs – product reliability, product enhancement



[www.lister-petter.com](http://www.lister-petter.com)  
[sales@listerpettergroup.com](mailto:sales@listerpettergroup.com)



POWERING YOUR NEEDS

S I N C E 1 8 6 7



# Product Overview

## AIR COOLED ENGINES



**A SERIES**  
AC1  
AD1



**L SERIES**  
LT1  
LV1



**T SERIES**  
TR1  
TR2  
TR3

## LIQUID-COOLED ENGINES



**ALPHA**  
LPW2  
LPW3  
LPW4  
LPWT4



**NEW ALPHA**  
LPWS2  
LPWS3  
LPWS4  
LPWST4



**SIGMA**  
20  
25  
30  
40



**DELTA**  
DWS4



**GAMMA**  
GW4  
GWT4  
GWT6-1A  
GWT6-2A  
GWTA-6



**OMEGA**  
OWT6  
OWTA6



**GAS**

**ALPHA GAS**  
LPWG2  
LPWG3  
LPWG4



**BIO-DIESEL**

**ALPHA BIO-DIESEL**  
LPWS BIO2  
LPWS BIO3  
LPWS BIO4

## GENERATING SETS



**AIR - COOLED**

**LISTER - PACK**

**AD1**

**HSL (TR)**  
OPEN & ACOUSTIC SET

**VILLAGE**  
OPEN SET



**WATER-COOLED**

**LLD (ALPHA)**  
OPEN & ACOUSTIC SET

**SIGMA**  
OPEN & ACOUSTIC SET

**DELTA**  
OPEN & ACOUSTIC SET

**GAMMA**  
OPEN & ACOUSTIC SET

**LLO (OMEGA)**  
OPEN & ACOUSTIC SET



**GAS**

**GS (ALPHA)**  
GAS GENSET



®



# LISTER PETTER ENGINES

[www.lister-petter.com](http://www.lister-petter.com)  
[sales@listerpettergroup.com](mailto:sales@listerpettergroup.com)



POWERING YOUR NEEDS

S I N C E 1 8 6 7



- **Basic Features**

- 2.1- 6.1kW
- Variable or Fixed Speed  
1500-3600 r/min
- Direct Injection
- Single Cylinder
- Hand or Electric Start
- Naturally Aspirated





# Applications – A Series

- **Gensets**
  - Auxiliary power units
  - Traffic lights
  - Military heating units
  - Tar boilers
- **Construction equipment**
  - Vibrating rollers
  - Vibrating plates
  - Concrete pokers
- **Centrifugal water pumps**
- **Hydraulic power packs**
  - Road Gritters



- **Basic Features**

- 1.0 - 7.4kW
- Variable Speed  
1000-3000 r/min
- Direct Injection
- Single Cylinder
- Hand or Electric Start





# Applications - L Series

- **Construction Equipment**
  - Cement mixers
  - Vibrating Rollers
- **Centrifugal Water Pumps**
- **Compressors**
- **Road Gritters**



[www.lister-petter.com](http://www.lister-petter.com)  
[sales@listerpettergroup.com](mailto:sales@listerpettergroup.com)



POWERING YOUR NEEDS

S I N C E 1 8 6 7

- **Basic Features**

- 5.5 – 28.5kW
- Variable or Fixed Speed  
1500-2500 r/min
- Direct Injection
- Diesel Fuelled
- 1,2 or 3 Cylinders
- Hand or Electric Start





# Applications - T Series

- **Pump Sets**
- **Gensets**
- **Marine**
  - Auxiliary
  - Propulsion
- **Construction**
  - Dumpers
  - Mixers
  - Piling Rigs
- **Hydraulic Power Packs**
- **Vacuum Pumps**
- **Mills**
- **Compressors**



[www.lister-petter.com](http://www.lister-petter.com)  
[sales@listerpettergroup.com](mailto:sales@listerpettergroup.com)

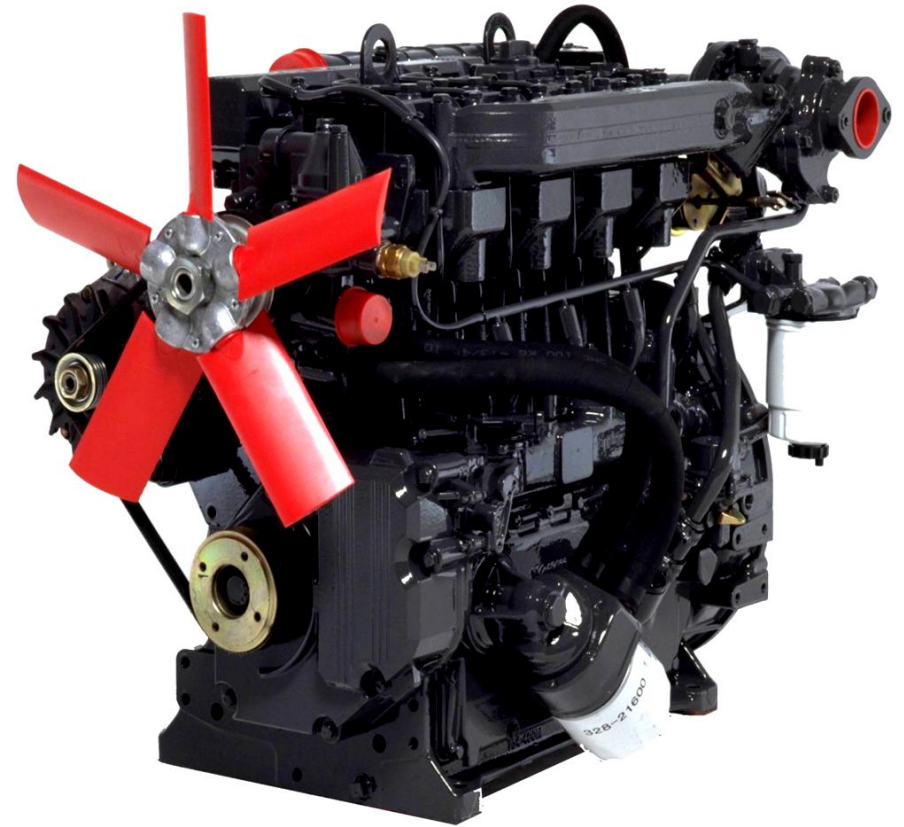


POWERING YOUR NEEDS

S I N C E 1 8 6 7

- **Basic Features**

- Water Cooled
- 6.8kW- 41.3kW
- Variable or Fixed Speed  
1500-3600 r/min
- Direct Injection or  
Indirect Injection
- 2,3 or 4 cylinders





# Applications – Alpha Series

- **Generating Sets**
- **Marine**
  - Auxiliary
  - Propulsion
- **Construction Equipment**
- **Hydraulic power packs**
- **Water Pumps**
- **Compressors**
- **Forklifts**
- **Tele-handlers**
- **Tractors**
- **Turf Care**
- **Log Chippers**



[www.lister-petter.com](http://www.lister-petter.com)  
[sales@listerpettergroup.com](mailto:sales@listerpettergroup.com)



POWERING YOUR NEEDS  
S I N C E 1 8 6 7



- **Basic Features**

- 23.7kW - 48.5kW
- Variable or Fixed Speed  
1200-2500 r/min
- Diesel Fuelled
- Indirect Injection
- 4 cylinders
- Naturally Aspirated





# Application - Delta Series

- **Compressors**
- **Forklift**
- **Gensets**
- **Pumps**



[www.lister-petter.com](http://www.lister-petter.com)  
[sales@listerpettergroup.com](mailto:sales@listerpettergroup.com)



POWERING YOUR NEEDS  
S I N C E 1 8 6 7

- **Basic Features**

- 20kW - 40kW
- Variable or Fixed Speed  
1500–2200 r/min
- Diesel Fuelled
- 3 Cylinders
- Naturally Aspirated
- Direct Injection





# Application - Sigma Series

- **Generating Sets**
- **Water Pumps**
- **Compressors**
- **Vibrating Rollers**
- **Log Chippers**
- **Tractors**



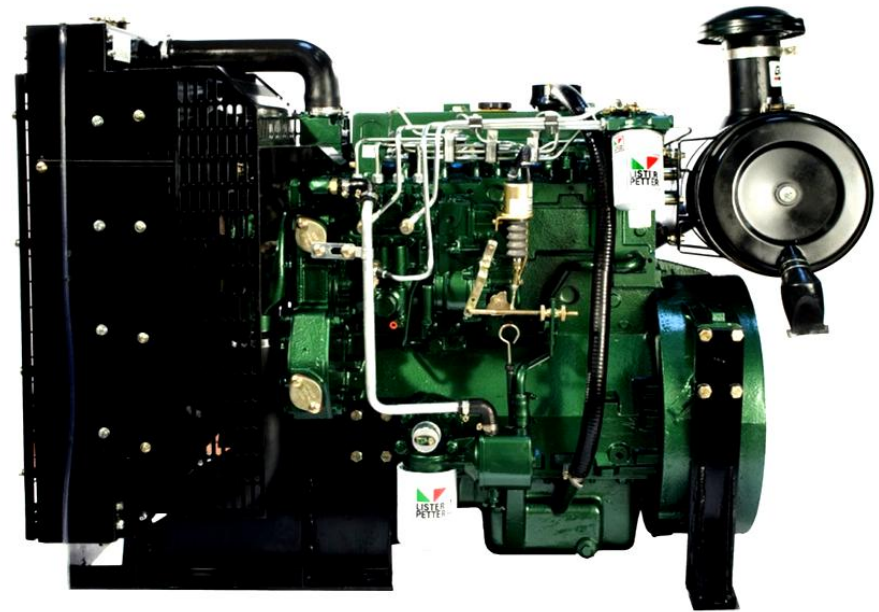
[www.lister-petter.com](http://www.lister-petter.com)  
[sales@listerpettergroup.com](mailto:sales@listerpettergroup.com)



POWERING YOUR NEEDS  
S I N C E 1 8 6 7

- **Basic Features**

- 40kW - 147kW
- Fixed or Variable Speed  
1500-2200 r/min
- Direct Injection
- Diesel Fuelled
- Turbocharged & Intercooled
- 4 or 6 cylinders
- Standard Oil & Fuel Filters





# Applications - Gamma Series

- **Generating Sets**
- **Water Pumps**
- **Compressors**
- **Vibrating Rollers**
- **Log Chippers**



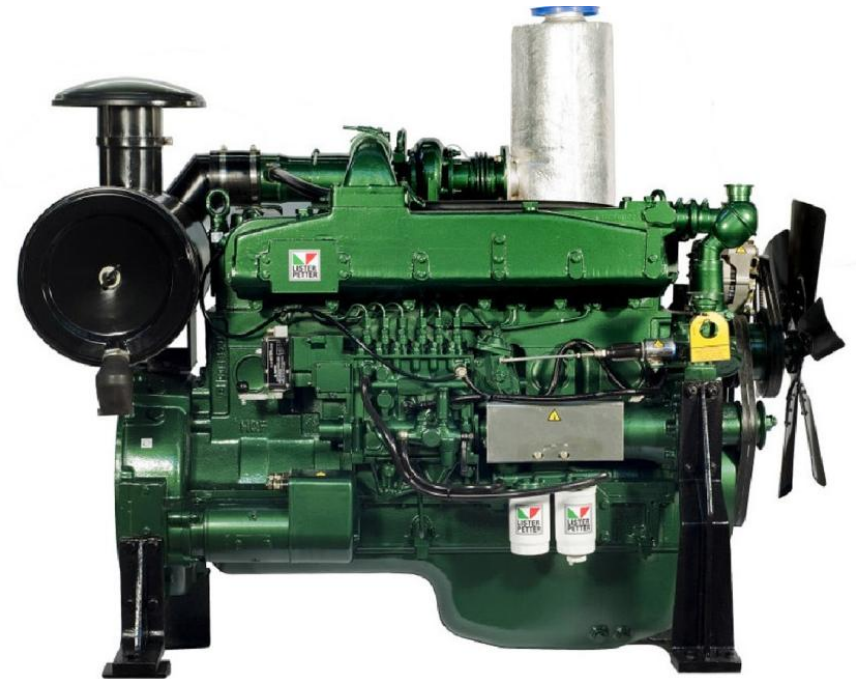
[www.lister-petter.com](http://www.lister-petter.com)  
[sales@listerpettergroup.com](mailto:sales@listerpettergroup.com)



POWERING YOUR NEEDS  
S I N C E 1 8 6 7

- **Basic Features**

- 138-258kW
- Fixed or Variable Speed
- 1100-2200 r/min
- Diesel Fuelled
- Direct Injection
- 6 cylinders
- Cold Start Aid
- Turbocharged (OMEGA 100)
- Turbocharged and Intercooled (OMEGA 200)





# Application – Omega Series

- **Generating Sets**
- **Water Pumps**
- **Compressors**
- **Vibrating Rollers**
- **Log Chippers**
- **Marine Propulsion**



[www.lister-petter.com](http://www.lister-petter.com)  
[sales@listerpettergroup.com](mailto:sales@listerpettergroup.com)



POWERING YOUR NEEDS  
S I N C E 1 8 6 7



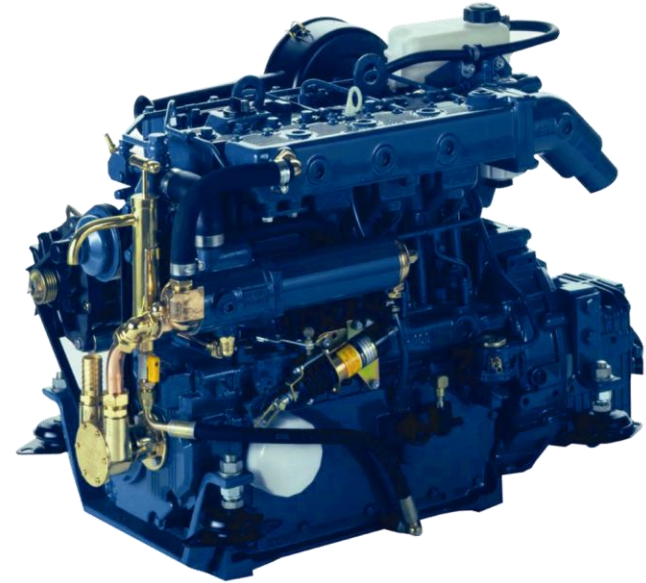


# Applications Marine Diesel Engines

**For pleasure boats, work boats, lifeboats,  
auxiliary & marine generating sets etc.**

- Heat Exchanger Cooled Marine Propulsion Engines from 14.9 to 240 kW
- Keel-cooled marine propulsion engines from 14 to 41 kW
- Marine auxiliary generating sets from 5.9 kVa to 28 kVa

*Lister*  
MARINE  
DIESELS



[www.lister-petter.com](http://www.lister-petter.com)  
[sales@listerpettergroup.com](mailto:sales@listerpettergroup.com)



POWERING YOUR NEEDS

S I N C E 1 8 6 7



®



# LISTER PETTER PACKAGED PRODUCTS

[www.lister-petter.com](http://www.lister-petter.com)  
[sales@listerpettergroup.com](mailto:sales@listerpettergroup.com)



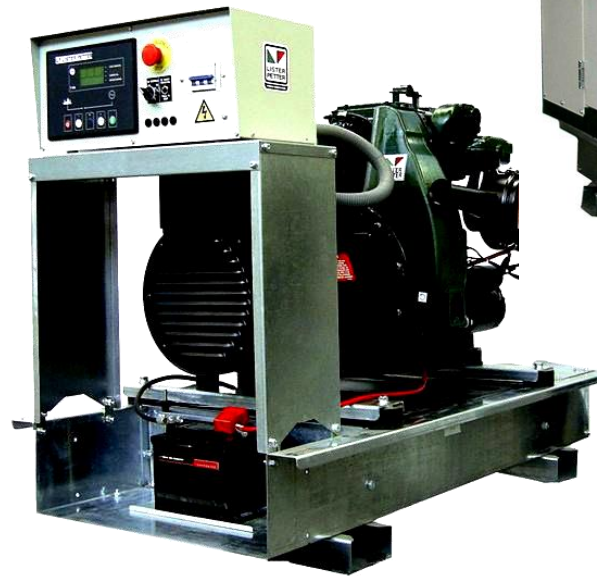
POWERING YOUR NEEDS

S I N C E 1 8 6 7



# Lister Petter Generating Sets

- Lister Pack
- AD1 – A Series
- HSL – T Series
- LLD - Alpha
- LLS - Sigma
- LLD – Delta
- LLG – Gamma
- LLO - Omega



[www.lister-petter.com](http://www.lister-petter.com)  
[sales@listerpettergroup.com](mailto:sales@listerpettergroup.com)



POWERING YOUR NEEDS  
S I N C E 1 8 6 7



# Applications – Generating Sets

- Telecoms
- Standby power
- Rental sets
- Prime power / Base load
- Mobile
- Lighting Towers
- Military – APU – Auxiliary Power Units
- Industrial



[www.lister-petter.com](http://www.lister-petter.com)  
[sales@listerpettergroup.com](mailto:sales@listerpettergroup.com)



POWERING YOUR NEEDS

S I N C E 1 8 6 7



# Long Running Systems

- Extended Sump 500 hrs
- Remote Oil Tank 2000 hrs
- Fewer Maintenance Visits
- Mechanical Pump
- Extra Bypass Filter
- Standard Oil/Air/Fuel Filter
- Reduced Logistics Costs



## High Flow Irrigation Pumps

- Flow – up to 600 M<sup>3</sup>/hr
- Head – 8 to 25 metres

## Air – cooled TR engines provide:

- Tropical/temperature conditions
- Ambient temperatures up to 52C
- 24 hours continuous operation
- Handle start





# Applications – Welding Sets

- Welding or auxiliary power supply
- Simple to use, just screw on your welding gun
- High output for the hardest welding jobs
- Easy to move around site
- Water – cooled ALPHA engines provide:
  - Diesel fuelled
  - 2-3 cylinders
  - Direct Injection





# Applications - Bio Rig

- **Makes ISO quality B100 Bio-Diesel from straight or recycled vegetable oils (palm; peanut; soy; vegetable; rapeseed; jatropha, etc.)**
- **420 litres of B100 bio-diesel per hour**
- **Power input - 14.4kW**
- **Renewable energy (carbon neutral).**
- **ECU controlled automatic process; Stainless steel construction**
- **Lister Petter Bio-Alpha engine will run on pure B100 Bio-Diesel.**
- **Bio-Diesel can be blended to make B20 etc. to match diesel vehicle requirements.**



[www.lister-petter.com](http://www.lister-petter.com)  
[sales@listerpettergroup.com](mailto:sales@listerpettergroup.com)



POWERING YOUR NEEDS  
S I N C E 1 8 6 7





# QUALITY

- **ISO 9001:2002 Accreditation**
- **TS16949 Accreditation**
- **ISO 14001 Accreditation**
- **Warranty Levels 50% of Industry Standard**
- **Engine & Application Training School – in UK or On Site at Customer**
- **Full Inspection & Testing Facilities**
- **Supplier Development – Right First Time, Lean Principles, Training Programs**
- **Lean Manufacturing Integration – Stock Control, Waste Elimination, Process Flow, Dual Sourcing – Production Flexibility**

[www.lister-petter.com](http://www.lister-petter.com)  
[sales@listerpettergroup.com](mailto:sales@listerpettergroup.com)



POWERING YOUR NEEDS  
S I N C E 1 8 6 7

# Quality Policy

- *Achieve, maintain and continually improve the effectiveness of the Quality Management System*
- *Determine and conform to all agreed customer and business objectives, and take adequate and timely actions to correct any non-conformances that occur*
- *Develop supply chain partnerships and encourage them to implement Quality Management Systems*
- *Continually support our customer's needs and adopt our products and services to ensure customer satisfaction*
- *Empower employees in support of the policy, Quality Management System and business objectives. Ensure the policy is available to all the employees.*
- *Periodically carry our management reviews against the quality objectives and review continuing suitability of the Quality Management System.*



Lister Petter Group is a leading UK designer and manufacturer of highly engineered engines and generating sets. Lister Petter Group is renowned the world over for quality and reliability and this policy is defined to ensure that we protect our heritage and enhance the future of Lister Petter Group by delivering quality reliable products that will enhance the success of our customers as well as Lister Petter Group.

It is the company policy to pursue continual improvement through consistently providing product and services to our customers, which meet all regulatory, statutory and customer requirements.





®



If you would like to enquire in more detail about any aspects of this Customer Information Pack please call +44 1453 541 048 or email your queries to [sales@listerpettergroup.com](mailto:sales@listerpettergroup.com)

**[www.lister-petter.com](http://www.lister-petter.com)**  
**[sales@listerpettergroup.com](mailto:sales@listerpettergroup.com)**



POWERING YOUR NEEDS

S I N C E 1 8 6 7